

CERTIFICATE OF LOCATION OF GOVERNMENT CORNER

Southeast Corner of Section 22, Township 106N, Range 41W, 5th P.M.

STATE OF MINNESOTA, County of Murray

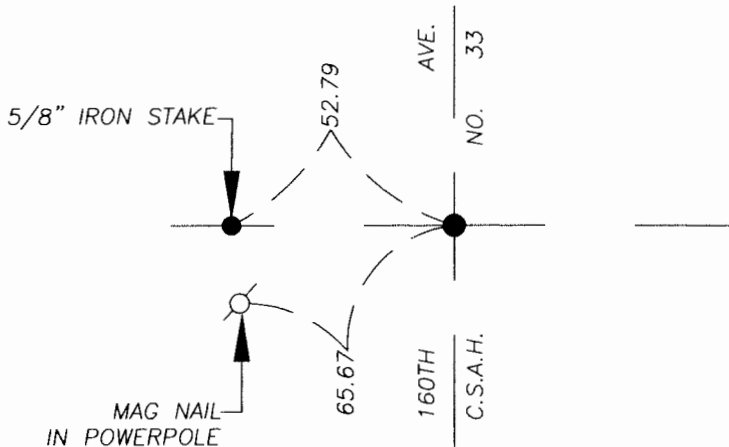
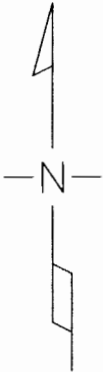
At the corner location shown on the sketch

On 11/09/05 found a 10" X 12" stone, 5.1' deep on road centerline. See sheet 2.

left stone as found lowered monument, 60D Spk. & 1/2" iron

On 11/09/05 placed a 1" iron pipe with red survey cap #43803 over top of stone.

SKETCH OF REFERENCE TIES



MURRAY CO. COORDINATES
 NAD 83 (1996 ADJ.)
 142307.30N
 506155.81E

I hereby certify that this document and the data contained herein was prepared by me or under my direct supervision.

Dennis Ray Esplan 12/13/05
 SIGNATURE DATE

MN. LICENSE NO. 43803

- Land Surveyor, Professional Engineer
 County Surveyor, County Engineer

OFFICE OF THE COUNTY RECORDER

I hereby certify that this document was filed in the Co. Recorder's Office at _____ on the

_____ day of DEC 14 2005

County Recorder James V. Johnson
 By _____, Deputy

DOCUMENT NO. _____

Statement of Evidence

Original Township Subdivision was surveyed by L.G.M. Fletcher in 1861.

1959 Murray Co. Hwy. Dept grading plans indicate a 2" X 2" wood hub was found over stone.

November 2005

Greg Zieske and Brad Chester with Zieske Land Surveying, Inc. excavated with a backhoe and found a 60D spike over 1/2" iron stake over 10" X 12" stone, stone is 5.1 feet deep. Placed 1" iron pipe with red survey cap #43803 over top of stone.

